



FREEHOLD

House - Semi-Detached

EXTENDED 4 BEDROOM FAMILY HOME - RIVERDENE, EDGWARE

Offers Over

£600,000

FEATURES

- 4 bedroom family house
- Downstairs guest w.c.+ shower
- Large through lounge
- Extended at the rear on the ground floor
- Loft converted to a large double bedroom
- Garage



4 Bedroom House - Semi-Detached located in Edgware

Space Residential are delighted to present this fabulous well presented 4-bedroom extended family home.

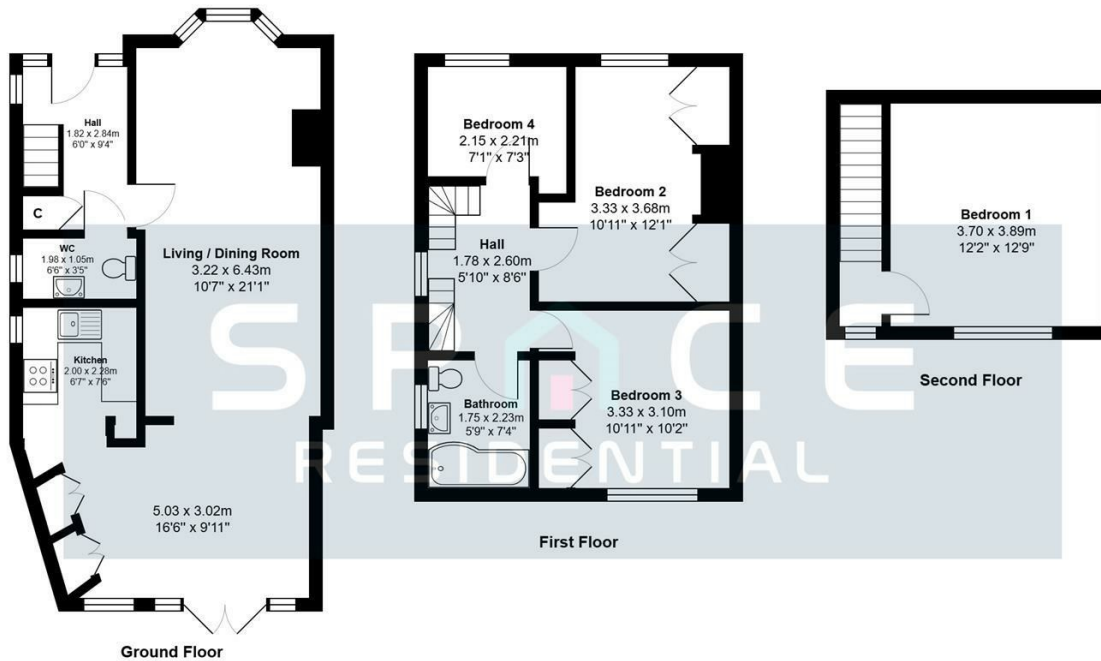
Located mid-way between Mill Hill and Edgware Town centres, the house comprises:

A large through lounge leading into an extension at the rear currently used as a dining room, a modern fitted kitchen, a downstairs guest w.c. with shower. On the first floor there is a large modern family bathroom with 2 double bedrooms and a smaller third single bedroom room.

There are stairs leading up to the loft bedroom where this a further double bedroom.

To the rear is a very generous sprawling garden with a patio and a garage at the side.

There is also off-street parking at the front on a private driveway with space for 2 cars.



Total Area: 104.8 m² ... 1128 ft²
All measurements are approximate and for display purposes only

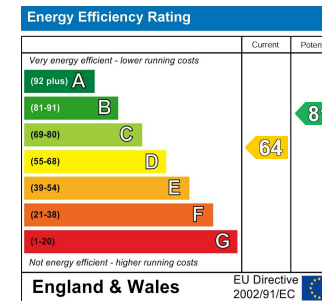
Call us on

0208 906 2222

info@spaceresidential.com
spaceresidential.com

Council Tax Band

E



Agents Note: Whilst every care has been taken to prepare these particulars, they are for guidance purposes only. All measurements are approximate and are for general guidance purposes only and whilst every care has been taken to ensure their accuracy, they should not be relied upon and potential buyers are advised to recheck the measurements.

